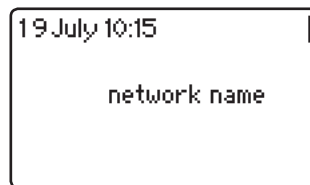


The standby screen

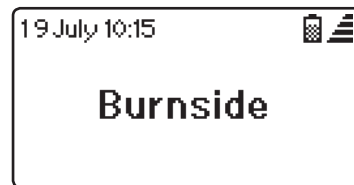
When the P230 is not involved in a call or any other operation, it will display a screen similar to one of those shown below. In addition to the time, date, signal strength and other status icons, you can choose to make it show the network name, a big clock or a banner. Use the Settings option within the menu to determine which standby screen is displayed - please refer to the full user guide for details.



Standby screen showing network name



Standby screen showing the big clock



Standby screen showing the editable banner

This quick start guide will help you to set up, switch on and begin using your P230 desktop mobile phone. For further information, please refer to the full user guide.

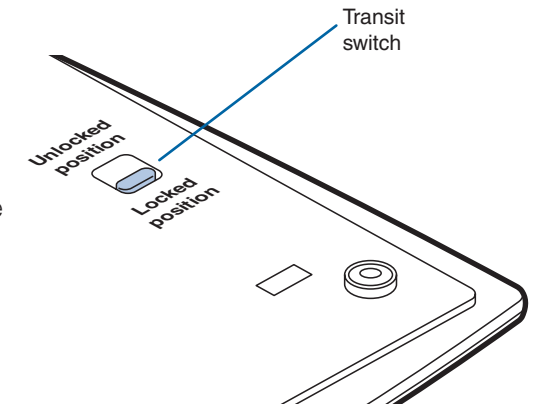
Setting up

Unlock the transit switch

When shipped, your P230 is locked for transit to prevent it from powering on accidentally. You need to unlock the phone before it will operate.

- 1 On the underside of the P230, locate the recessed switch near to where the handset cable attaches.
- 2 Slide the switch towards the rear of the P230 unit.

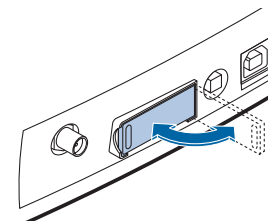
The P230 will not switch on at this stage.



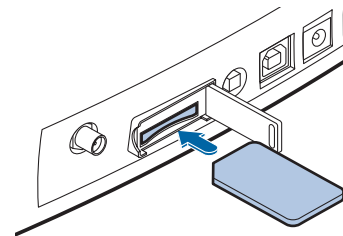
Install your SIM card

Note: Ensure the P230 is switched off.

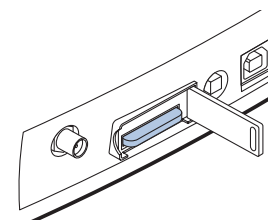
- 1 On the rear panel of the P230, carefully swing open the SIM slot door.



- 2 Orientate your SIM card with its contacts facing downwards and the notched corner facing towards the slot.



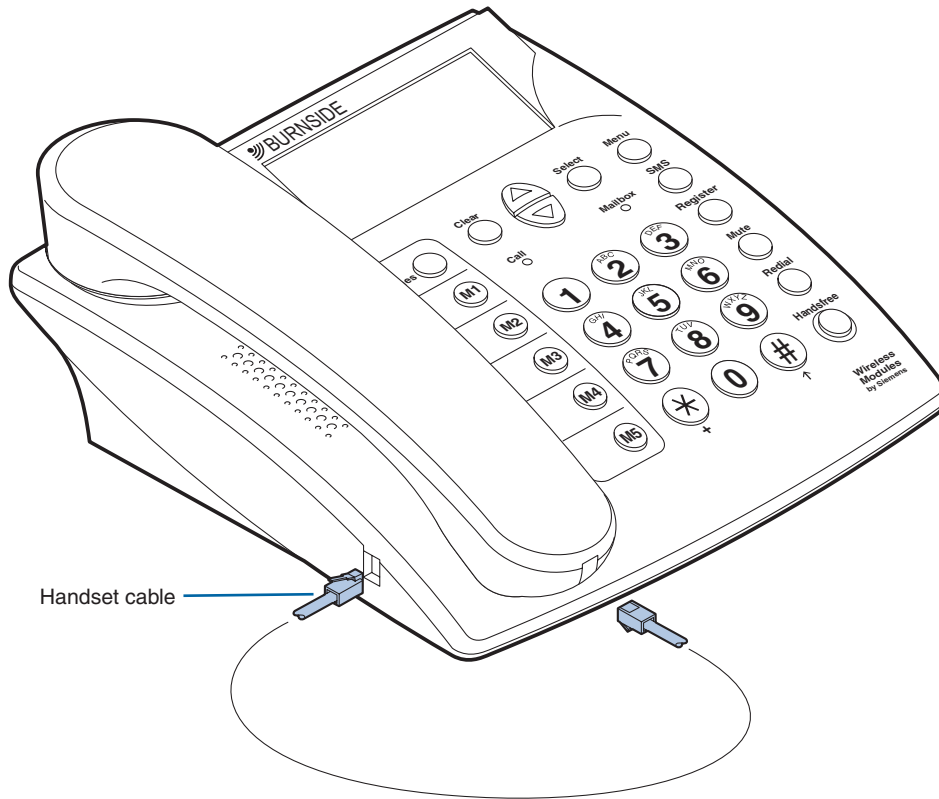
- 3 Push the SIM card into the slot until it clicks into place. Close the door.



Note: To remove the SIM card, press it inwards to release and partially eject it. Then slide it out of the slot.

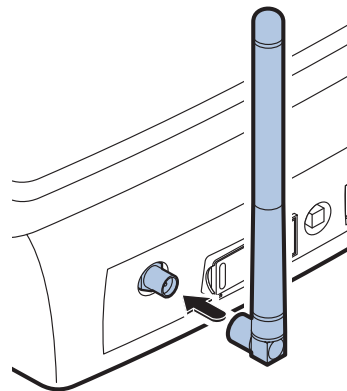
Attach the handset cable

- 1 Locate the handset and the supplied cable.
- 2 Connect one end of the cable to the socket at the base of the handset and the other end to the socket in the left side of the P230 unit. Each connector will click into place once inserted correctly.



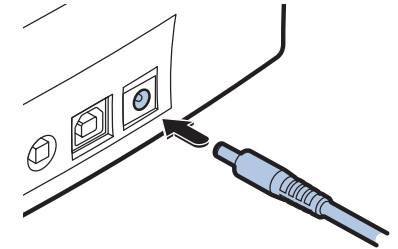
Attach the antenna

- 1 Align the supplied antenna (or another suitable GSM antenna) with the circular connector on the far left of the rear panel.
- 2 Attach the antenna and twist the connector collar clockwise until it is finger-tight - do not overtighten.
- 3 In use, the antenna should always be vertical. The supplied antenna has a hinge so that you can position it correctly.



Attach the power adapter

- 1 Attach the connector from the power adapter to the socket on the far right of the rear panel.
- 2 Plug the power adapter main body into a nearby mains outlet and ensure that the outlet is switched on.



Switch on

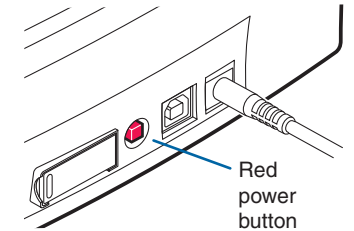
- 1 On the rear panel, press and hold the red button until the display responds, then release.

Notes:

To switch off, press and hold the red button until the display goes blank.

During normal use, the P230 should only be switched on and off using the red button. Only use the transit switch once the unit has been turned off.

If the transit switch is inadvertently moved to the locked position, the P230 will immediately shut off or enter a charging state if the power adapter is connected.



Speed dial memories and Auto Handsfree

The phone features five buttons which allow instant access to your most regularly used contacts. You can program each memory button with a contact from the phonebook or you can enter a completely new name and phone number. To call a speed dial contact, you need only to press the relevant memory button and the **Handsfree** button (or pick up the handset). You can also choose a 'One press call' option for each memory, which means that you don't even need to press the **Handsfree** button.

Additionally, once a contact is registered within one of the five speed dial memories, you can instruct the P230 unit to automatically accept incoming calls from that contact. This is an ideal feature (called Auto Handsfree mode) for people who may be temporarily or permanently incapacitated (or are otherwise unable to reach the phone), because there is no need to press any button. The incoming call from the listed contact will be answered after a set number of rings (between 2 to 9) as determined by you. Once answered, the handsfree speaker and microphone will be activated to allow full conversation to take place. The call can be ended by either party. If ended by the caller, the P230 will automatically return to standby, ready for another call.

